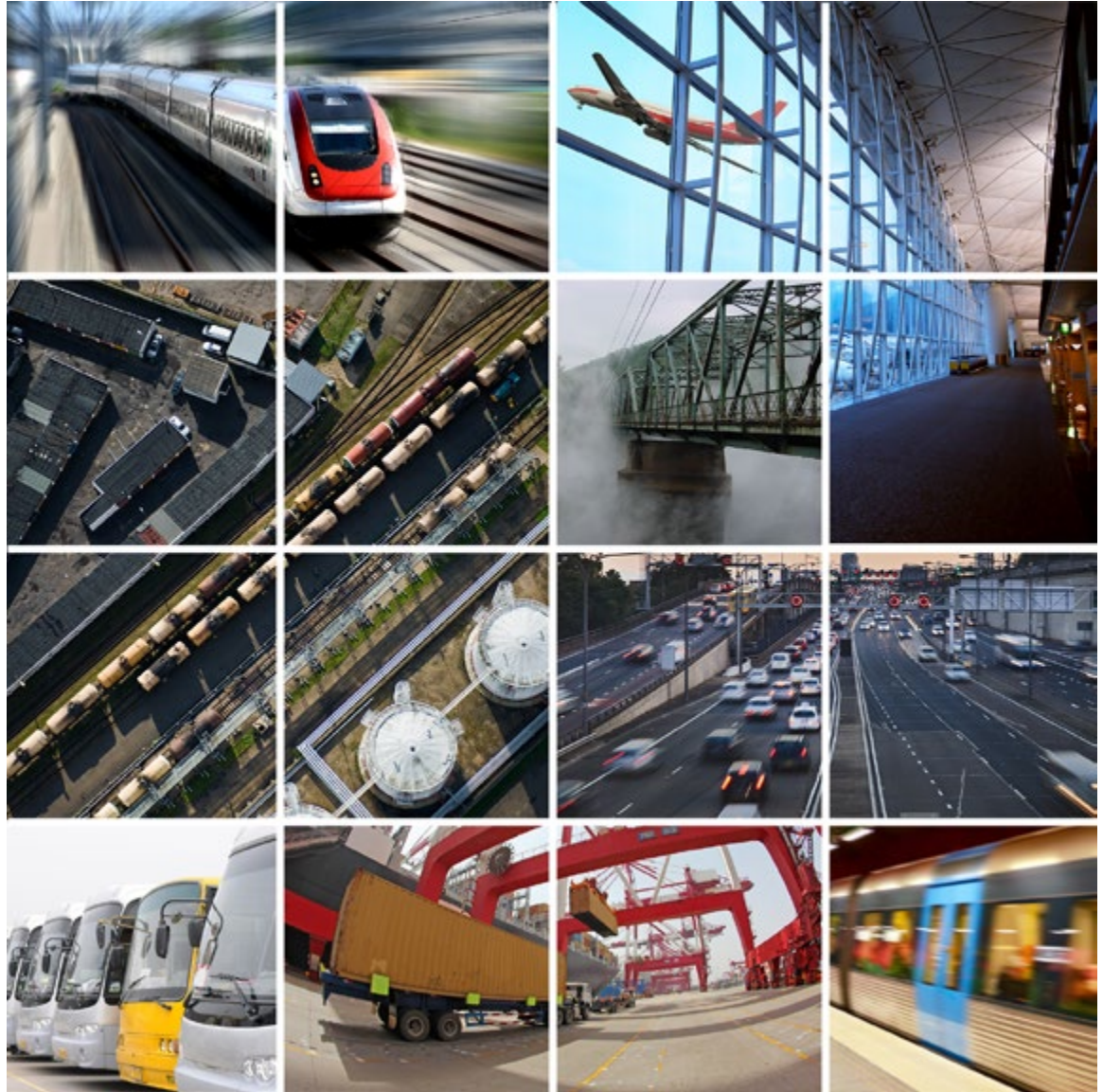


transportation





The best at what we do

Services:

- Site surveys and vulnerability assessments
- Project management for large, complex projects
- Engineering designs including hardware fabrication
- Large-scale complex security systems integration, installation and maintenance
- Security software customization
- Risk mitigation and business continuity

Solutions:

- Mobile Surveillance Unit (MSU) program management and delivery
- Wisdom — a highly sophisticated, scalable and customizable, object-based command and control software platform compliant with the DHS SAFETY Act
- Unique, customized solutions for transportation, critical asset protection, and law enforcement

Competencies:

- Subject matter expertise in law enforcement, transportation, and critical asset protection
- Quality and process-driven (ISO 9001 certified)
- CMMI Level 3 software application development lab
- World-class hardware design and manufacturing labs
- Customization of command and control center security visualization software
- Human-Machine Interface (HMI) configuration and customization
- Wi-Fi network design and deployment
- Sensor- and detection-technology experts
- Security System Architecture Center of Excellence



Our Software Products

Wisdom — An integrated software platform capable of collecting and displaying both data and video from cameras, access control devices, and VTS, AIS and other sensors fused into an intuitive visualization. Wisdom is a System-of-Systems, unifying data from a variety of disparate sensors, converting and converging both message and network protocols, and applying a variety of data processing algorithms — all to present a security operator with real-time unified situational awareness.

Unified, real-time situational awareness enables an operator to quickly analyze and provide fact-based responses to any event. The situational awareness picture displays sensor status, system operational conditions, alerts, events, incidents, and target details in a clear, visual format, enabling the operator to easily track and respond to developing circumstances.



Our Customers

Our systems protect over 2 million residents in cities Worldwide

- Close to **16 million** Rail passengers annually rely on 4D's Systems for their travel safety
- Over **500 miles** of International Border is monitored and secured by our systems
- Over **7 thousand** CCTV Cameras have been installed and accepted by customers since 2004
- There have been over **600 License Plate Readers** deployed globally
- **15%** of the world's LNG supply is protected by 4D Systems

Our customers include some of the world's leading governments, transportation and law enforcement agencies. 4D Security Solutions is a valuable partner that has participated in multi-million dollar projects awarded around the world for the protection of critical infrastructure, port security, and law enforcement.

- City of Philadelphia Police Department – **Law Enforcement**
- Amtrak National Passenger Railroad – **Transportation**
- Tata Chemicals – **Critical Infrastructure**
- AGT International Inc. – **Critical Infrastructure**
- Erie County, NY – **Law Enforcement**
- US Department of Energy – **Critical Infrastructure**

Our People

4D is a flexible and agile organization with over 170 employees able to respond quickly and effectively when required (40% of our staff hold Bachelors and 54% hold advanced Masters or PhD degrees). From the analysis, design, implementation, integration, and testing of software, hardware and networks — to training, documentation, and support, 4D has broad expertise in the full solution lifecycle. 4D's proven program and project management expertise ensures that project milestones occur on schedule, and communications are clear and open, keeping our customer relationships productive and effective.

Our Company

4D Security Solutions, Inc., based in South Plainfield, New Jersey, has implemented state-of-the-art innovative secure systems since its inception in 2004. 4D is a security solutions provider offering systems assessment, design, installation, and systems integration services to major customers with large critical facilities, in operations such as airports, petrochemical plants, borders, rail, maritime ports, and urban area traffic monitoring and control. 4D's technology and services are proven in demanding environments world-wide including some of the world's largest metropolitan critical asset and transportation projects.



ISO 9001
CERTIFIED
ISO 9001:2008



www.4-Dsecurity.com

(908) 822.1075

Technical Office

111A Corporate Blvd.
South Plainfield, NJ 07080

New York Office

375 Park Ave - 29th Floor
New York, NY 10152



 4DSecSolutions

 4d-security-solutions-inc.