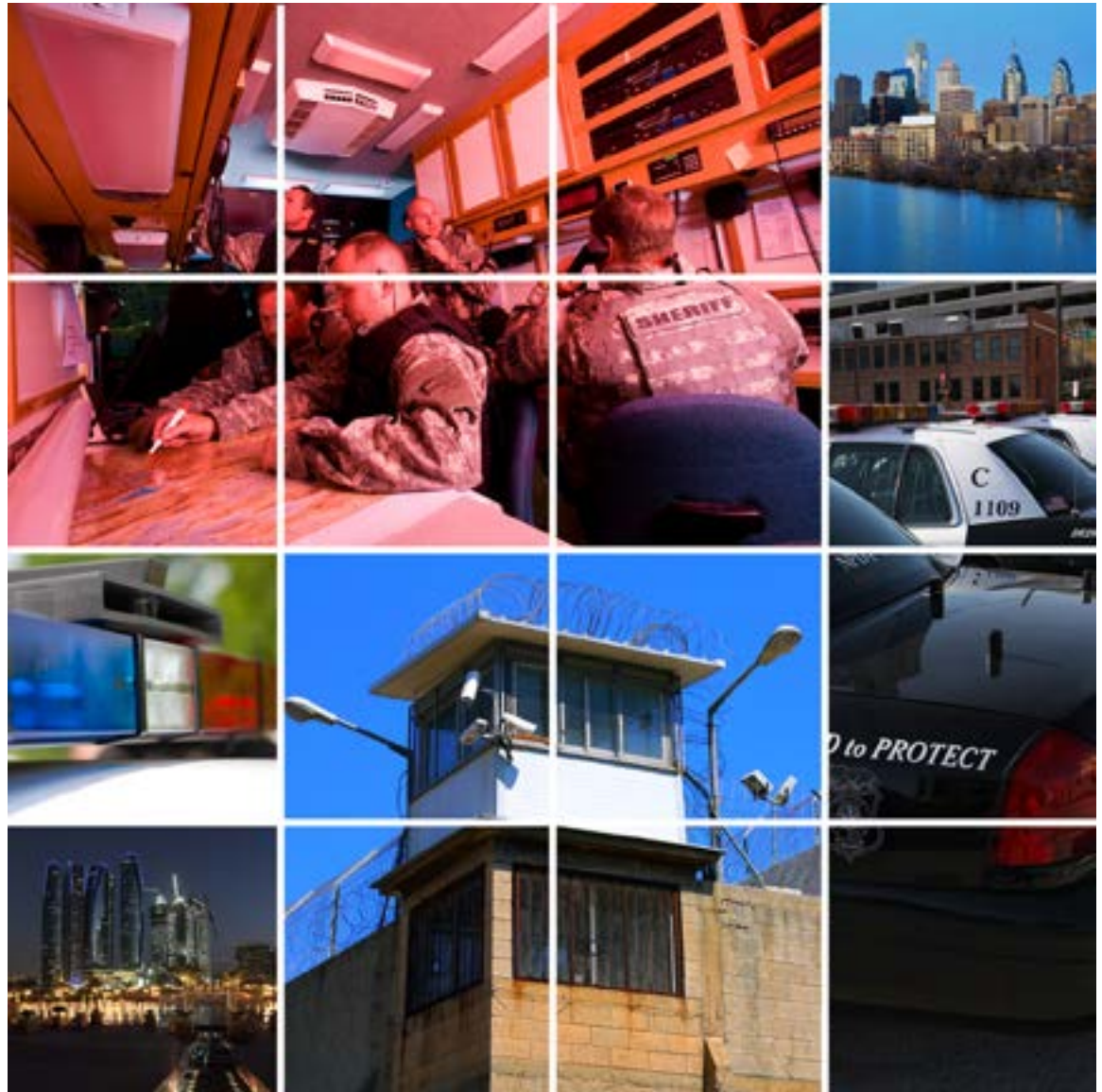


law enforcement





Make smarter decisions that help save lives

Security.

Safety.

Operations.

— **These are your daily concerns.**

The Wisdom LE command and control platform from 4D Security Solutions lets you manage any and all of these domains from a single interface. Wisdom LE offers tools for visibility into incident details. This is critical for agencies to provide a coordinated response that supports data-sharing and mutual-aid workflows.

Our Wisdom LE software ensures the right information is available for making faster, smarter decisions. Wisdom LE is specifically designed for law enforcement applications. Key features include specialized video management and incident management capabilities that optimize law enforcement response capabilities and minimize response times.

The Wisdom platform ingests and displays virtually any sensor feed — such as AIS, cameras, radar, sonar, access control and alarm systems — while its design allows users, command center personnel, intelligence analysts, and others to quickly interpret information, collaborate, and make actionable recommendations rather than merely collecting and presenting data. Wisdom also leverages the power of outside information to build a more detailed and relevant common operating picture.

Incident management displays events on a unified situational awareness map to enhance security operators' understanding of, and ability to react to, incidents. Wisdom LE integrates with systems including a wide range of security infrastructure partners and system architectures, making it easy to deploy and operate.



Our Software Products

Designed for Law Enforcement Agencies

- Integration with municipal emergency call centers (911)
 - Calls for service are displayed on the map
 - GIS display of real-time event feed
 - Display of detailed event and related information
 - Aids response coordination
- Video monitoring and event assessment
- Field Operations Guide
 - Provides standard event response procedures
 - Standard response templates for critical events
 - Customizable for specific situations and events
- Visualization of resource availability
 - Coordination of event responses
 - GIS display of available resources



Our Customers

- Our systems protect over **2 million** residents in cities Worldwide
- Close to **16 million** Rail passengers annually rely on 4D's Systems for their travel safety
- Over **500** Miles of International Border is monitored and secured by our systems
- Over **7 thousand** CCTV Cameras have been installed and accepted by customers since 2004
- There have been over **600** License Plate Readers deployed globally
- **15%** of the world's LNG supply is protected by 4D Systems

Our customers include some of the world's leading governments, transportation and law enforcement agencies. 4D Security Solutions is a valuable partner that has participated in multi-million dollar projects awarded around the world for the protection of critical infrastructure, port security, and law enforcement.

- City of Philadelphia Police Department – Law Enforcement
- Amtrak National Passenger Railroad – Transportation
- Tata Chemicals – Critical Infrastructure
- AGT International Inc. – Critical Infrastructure
- Erie County, NY – Law Enforcement: Value, start date
- US Department of Energy Critical Infrastructure

Our People

4D is a flexible and agile organization with over 170 employees able to respond quickly and effectively when required (40% of our staff hold Bachelors and 54% hold advanced Masters or PhD degrees). From the analysis, design, implementation, integration, and testing of software, hardware and networks — to training, documentation, and support, 4D has broad expertise in the full solution lifecycle. 4D's proven program and project management expertise ensures that project milestones occur on schedule, and communications are clear and open, keeping our customer relationships productive and effective.

Our Company

4D Security Solutions, Inc., based in South Plainfield, New Jersey, has implemented state-of-the-art innovative secure systems since its inception in 2004. 4D is a security solutions provider offering systems assessment, design, installation, and systems integration services to major customers with large critical facilities, in operations such as airports, petrochemical plants, borders, rail, maritime ports, and urban area traffic monitoring and control. 4D's technology and services are proven in demanding environments world-wide including some of the world's largest metropolitan critical asset and transportation projects.



4D SECURITY
SOLUTIONS

ISO 9001
CERTIFIED
ISO 9001:2008



www.4-Dsecurity.com

(908) 822.1075

Technical Office

111A Corporate Blvd.
South Plainfield, NJ 07080

New York Office

375 Park Ave - 29th Floor
New York, NY 10152



 4DsecSolutions

 4d-security-solutions-inc.